



Firesafe application type **Acoustic**

Construction type **Floors**

**ROCKWOOL**

# Rockwool SlimFloor

To meet Robust Details for Concrete Separating Floors

Rockwool SlimFloor has been specially developed to provide acoustic insulation for concrete separating floors. It meets the enhanced acoustic performance requirements of Robust Details for concrete floors\*.

Rockwool SlimFloor consists of 10mm high density Rockwool pre-bonded to an 18mm C4 moisture resistant T&G chipboard.

Rockwool SlimFloor is easy to lay and will accommodate small irregularities of the sub floor. It works on the 'floating floor' principle to isolate and absorb impact and airborne sound.

An ideal acoustic solution from the Rockwool SoundPro range.

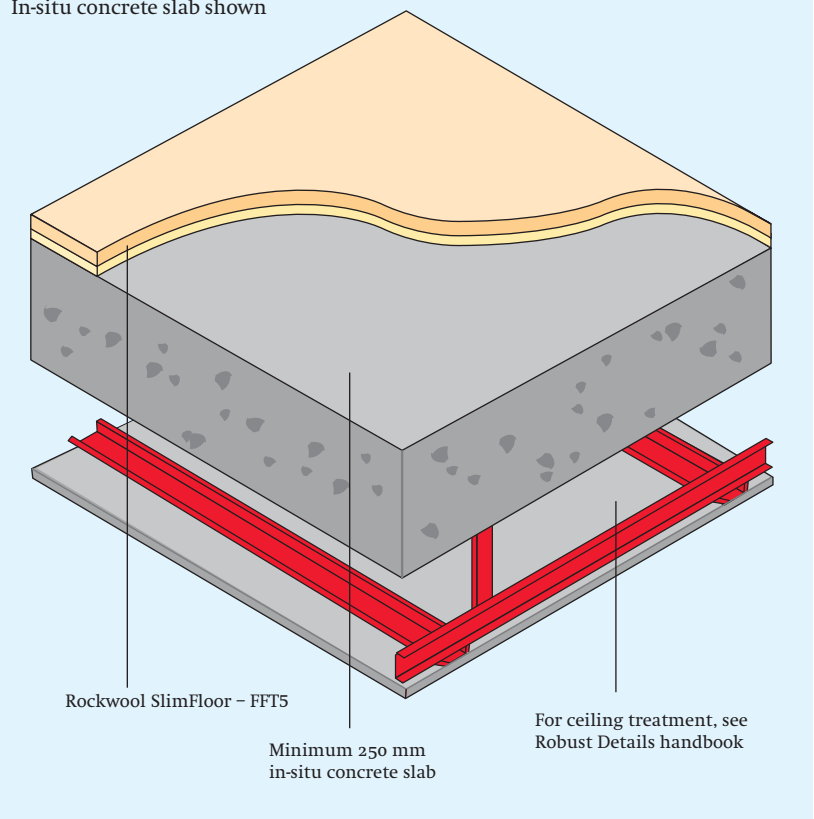
### Advantages

- Meets new Robust Details for concrete floating floors\*
- Vapour barrier incorporated
- High compressive strength
- Resilient
- Simple to install – no multi-layer build up
- Total depth 28 mm, ideal where floor to ceiling height is important

\* Rockwool SlimFloor applies to the following Concrete Separating Floor Robust Details: E-FC-1, E-FC2, E-FS-1

### Separating Floor – Concrete

Robust Detail E-FC-2  
In-situ concrete slab shown



### Part E Performance Standards

**Airborne Minimum** 45 dB  $D_{nT,w}+C_{tr}$

**Impact Maximum** 62 dB  $L'_{nT,w}$

### Robust Details Performance Standards

**Airborne Range** Mean 50 dB  $D_{nT,w}+C_{tr}$  (min. 47)

**Impact Range** Mean 57 dB  $L'_{nT,w}$  (max. 60)

## Acoustic test results

Rockwool SlimFloor has achieved the acoustic performance requirements for floating floor treatments used with Robust Detail Concrete separating floors E-FC-1, E-FC-2 and steel-concrete composite floors E-FS-1.

Appendix D of Robust Details Part E outlines the test procedure followed. In this test, the Floating Floor must achieve a minimum laboratory measurement of delta L<sub>w</sub> 17 dB. SlimFloor achieved delta L<sub>w</sub> 25 db (BTC report 12912A).

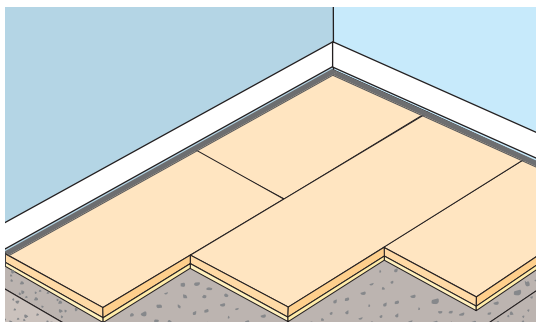
Note: The use of robust details provides an alternative to pre-completion site testing for demonstrating compliance with the performance standards of Part E.

Rockwool SlimFloor is defined as a FFT5 (Floating Floor Treatment 5), a resilient overlay shallow platform floor system.

## Design Details and Installation

Rockwool SlimFloor is laid in a staggered joint pattern starting from the furthest corner of the room from the doorway, using pva glue at the joints of the T&G.

Flanking strips are required between the floor edge and wall/skirting junctions to ensure that the SlimFloor does not contact the wall and door frames. The flanking strips must be composed of a resilient material (e.g. a minimum 5mm foamed polyethylene layer with self adhesive backing.)



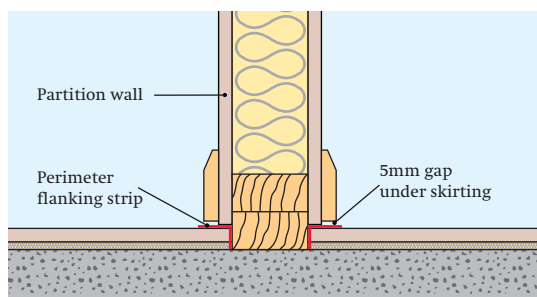
Staggered joint pattern with flanking strip shown

### Vapour Barrier

Rockwool Slimfloor incorporates an aluminium vapour barrier pre bonded to the insulation.

### Internal Partitions

These should not be built directly off SlimFloor but from the deck via a timber sole plate. Mechanical fixings through the SlimFloor to the sub deck should be avoided.



## Ceiling Types for concrete floors

For the types of ceiling to be used with the concrete floor, please refer to the individual Robust Detail published in the Robust Details handbook.

The sound insulation performance is increased if 25mm Rockwool Acoustic Partition Slab is placed in the ceiling void.

## Dimensions

2400 x 600mm overall thickness 28mm.

## Storage and conditioning

To ensure the units remain in a satisfactory condition, they should be at all times stored in a dry, enclosed building.

Units should be 'conditioned' on site by loose laying them individually in the area where the floor is to be laid for at least 24 hours before fixing.

## Supply

Rockwool SlimFloor is supplied on pallets, 54 pieces per pallet. Pallets are wrapped in polythene.

Minimum order quantity: 1 pallet (78 m<sup>2</sup>).

## Health and safety

Current HSE 'CHIP' Regulations and EU directive 97/69/EC confirm the safety of Rockwool mineral wool; Rockwool fibres are not classified as a possible human carcinogen.

The maximum exposure limit for mineral wool is 5mg/m<sup>3</sup>, 8 hour time-weighted average.

A Material Safety Data Sheet is available from Rockwool Customer Support (0871 222 1780) to assist in the preparation of risk assessments, as required by the Control of Substances Hazardous to Health Regulations (COSHH).

## Environment

Relying on entrapped air for its thermal properties, Rockwool insulation does not contain (and has never contained) gases that have Ozone Depleting Potential (ODP) or Global Warming Potential (GWP). Rockwool therefore complies with the relatively modest threshold of GWP<5 included in documents such as the Code for Sustainable Homes.

Rockwool Ltd is increasingly involved in recycling waste Rockwool material that may be generated during installation or at the end of life disposal. We are happy to discuss the individual requirements of contractors and users considering returning Rockwool materials to our factory for recycling.



## SoundPro range of acoustic solutions

Rockwool SlimFloor is a part of the Rockwool SoundPro range of acoustic solutions. Further information on the SoundPro range is available from our website [www.rockwool.co.uk](http://www.rockwool.co.uk) or our Rockwool Customer Support on 0871 222 1780.

Rockwool Limited reserves the right to alter or amend the specification of products without notice as our policy is one of constant improvement.

The information contained in this data sheet is believed to be correct at the date of publication. Whilst Rockwool will endeavour to keep its publications up to date, readers will appreciate that between publications there may be pertinent changes in the law, or other developments affecting the accuracy of the information contained in this data sheet.

The above applications do not necessarily represent an exhaustive list of applications for Rockwool SlimFloor. Rockwool Limited does not accept responsibility for the consequences of using Rockwool SlimFloor in applications different from those described above. Expert advice should be sought where such different applications are contemplated, or where the extent of any listed application is in doubt.

**ROCKWOOL**

Rockwool Limited  
Pencoed, Bridgend. CF35 6NY

info@rockwool.co.uk  
www.rockwool.co.uk

Printed on recycled paper